

ADFORS Novelio® paintable glassfibre wallcoverings

Product description

ADFORS Novelio® paintable wallcoverings:

- made from glassfibre
- woven or nonwoven
- in roll format
 - typical size 1 × 50 m
 - protected in plastic foil
 - packed in collective boxes on standard 120 × 80 cm pallets which are typically stackable

Product is designed to be painted with standard water based interior paints. All ADFORS Novelio® products are made in comply with EN15102, thus having CE mark.



ADFORS Novelio® paintable glassfibre wallcoverings

Typical use

Thanks to enormous number of weights, patterns and paints, ADFORS Novelio® offers an infinite variety of finished surfaces. Glassfibre origin brings long-term and durable protection of walls and excellent reaction to fire class without any additives, which make the product ideal for public areas as well as for the residential use.



ADFORS Novelio® paintable glassfibre wallcoverings

Product naming

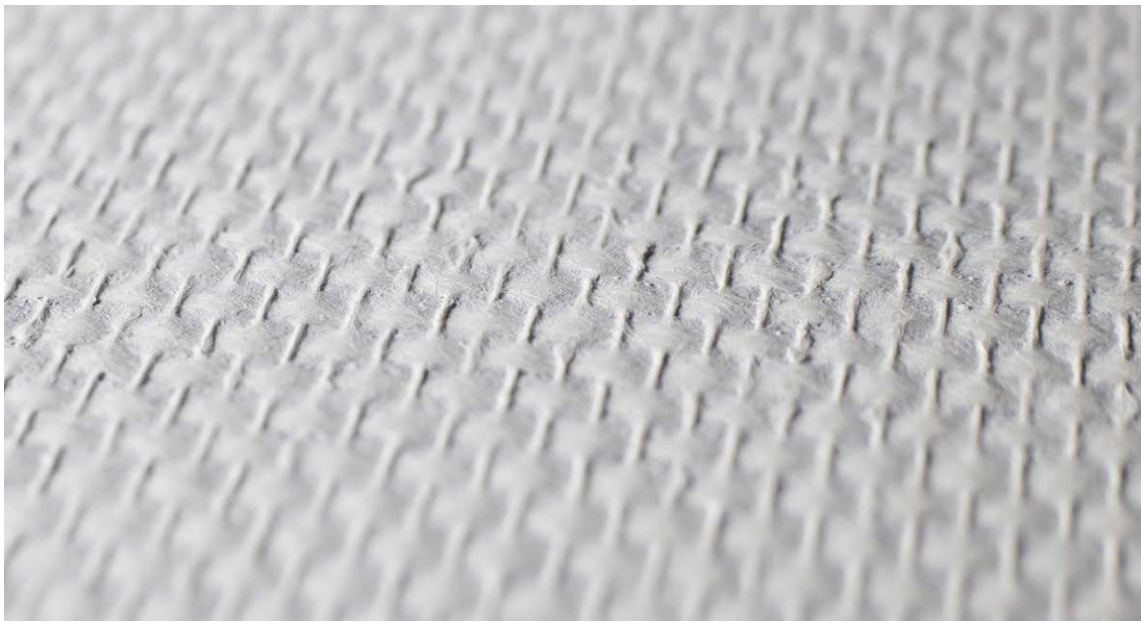
Examples: T1003, N0128, GV45

Prefix: T/N – woven wallcovering
F – FireResist
GV – nonwoven wallcovering (glass vlies)
CV – cellulosic nonwoven wallcovering

Number: In case of **T** and **N** it represents number of pattern
In case of **GV** (glass vlies, with flat structure, no pattern) it represents final weight of product

Suffix: C – EasyPaint (pre-painted)
E – EasyGlue (pre-glued)
X – EasyFix (self-adhesive)
F – CleanAir
M – Mold-X
S – Design (two-tones, sand-coated)
R – Renovation
Y – Acoustic

Examples: T1013, N0128 – Classic Standard
T1013C – Classic EasyPaint (pre-painted)
T1013CE – Classic EasyGlue & EasyPaint (pre-glued, pre-painted)



ADFORS Novelio® paintable glassfibre wallcoverings

Product ranges

ADFORS Novelio® comes in various ranges. Every range has its specific like time saving, effective installation for professionals, sanitary aspect to improve the indoor environment for the occupants or specific, unique designs to meet the highest visual expectations.

ADFORS Novelio® paintable glassfibre wallcoverings:

Classic

Traditional paintable wallcoverings.

Standard

Standard products, which should be painted twice (e.g.: T1003, N0128).

EasyPaint

Pre-painted products, which need just one layer of paint in case of light color finish (e.g.: T1112C).

EasyGlue

Pre-glued (and often pre-painted at the same time) products with water activated glue on the back side (e.g.: T1013CE).

Specialties

Specific paintable wallcoverings with additional features.

EasyFix

Self-adhesive products, which should be painted twice to achieve the final adhesion (e.g.: T1038X).

Mold-X

Sanitary products, which block development of molds and bacteria on their surfaces (e.g.: N0101M).

CleanAir

Sanitary products, which actively trap free formaldehyde from the air (e.g.: N0130F).

Renovation

Products for quick and easy renovation of old, cracked walls or old wallcoverings on them (e.g.: GV250CR).

Renovation Acoustic

Products for improvement of acoustic comfort in the room and for the heavy renovation jobs (e.g.: T1013CY).

Magnet

Magnetic products (e.g.: T1006CMG).

FireResist

System of pre-painted products and special glue with A2 reaction to fire class (e.g.: F1010C).

ADFORS Novelio® paintable glassfibre wallcoverings

Technical data

Width = 100 cm (can vary a little in order to respect the pattern - e.g.: Fishbone)

Length = 25 or 50 m (shorter lengths are available or can be made on demand)

ADFORS Novelio® Classic Standard

TYPE	PATTERN	WEIGHT [g/m ²] ±8%
60128	Weaving	110
60132	Small Weaving	110
60135	Weaving	120
60420	Zig Zag	170
60440	Diagonal	170
76128	Weaving	95
76228	Weaving	95
90101	Ceiling	145
90135	Weaving	135
99128	Weaving	110
99130	Weaving	115
CV100	Flat	100
CV120	Flat	120
CV130	Flat	130
CV149	Flat	150
CV150	Flat	150
CV50	Flat	50
GV35	DecoVeil	35
GV45	DecoVeil	45
N0060	Small Fishbone	180
N0081	Ceiling	105
N0100	Ceiling	115
N0101	Ceiling	130
N0105	Ceiling	135
N0120	Diagonal	175
N0125	Strip	160
N0128	Weaving	120
N0130	Weaving	120
N0133	Small Weaving	155
N0135	Weaving	120
N0136	Small Caro	175
N0139	Large Caro	210
N0140	Weaving	145

TYPE	PATTERN	WEIGHT [g/m ²] ±8%
N0145	Weaving	195
N0160	Fishbone	130
N0165	Fishbone	175
N0180	Braid	195
N0181	Braid	170
N0195	Weaving	220
N0260	Fishbone	150
N0440	Diagonal	170
N0485	Interlacing	180
N0490	Mosaic	190
N0530	Diamantine	220
N0700	Gresine	225
N0710	Crepine	220
N0730	Losine	210
N4860	Palm	250
N4875	Undulation	230
N9101	Ceiling	135
N9130	Weaving	130
N9135	Weaving	135
T1000	Weaving	168
T1003	Ceiling	136
T1004	Weaving	220
T1005	Strip	174
T1006	Ceiling	152
T1009	Braid	195
T1010	Weaving	147
T1011	Braid	159
T1012	Weaving	120
T1013	Weaving	158
T1015	Braid	160
T1017	Weaving	210
T1023	Mosaic	195
T1024	Small Weaving	147

TYPE	PATTERN	WEIGHT [g/m ²] ±8%
T1036	Lozenge Strip	205
T1038	Weaving	115
T1039	Weaving	110
T1050	Metis	126
T1051	Metis	200
T1109	Braid	230
T1112	Weaving	126
T1137	Diagonal Strip	179
T1138	Weaving	112
T1500	Weaving	82
T1501	Weaving	85
T1510	Weaving	96
T1511	Weaving	120
T2001	Small Fishbone	170
T2002	Domino	196
T2004	Fishbone	192
T2005	Diagonal	184
T2006	Fishbone	185
T2007	Lozenge	190
T2008	Diagonal	191
T2009	Diagonal	163
T2011	Smal Lozenge	193
T2012	Small Fishbone	220
T2014	Domino	195
T2018	Fishbone	145
T2024	Chess	166
T2101	Small Fishbone	180
T2105	Diagonal	184
T3001	Crepi	200
T3011	Crepi	155

ADFORS Novelio® paintable glassfibre wallcoverings

ADFORS Novelio® Classic EasyPaint

TYPE	PATTERN	WEIGHT [g/m ²] ±8%
CV180C	Flat	180
CV200C	Flat	200
GV130C	DecoVeil	130
GV190C	DecoVeil	190
GV200C	DecoVeil	200
GV70C	DecoVeil	85
GV75C	DecoVeil	100
N0260C	Fishbone	150
T1000C	Weaving	168
T1003C	Ceiling	136
T1006C	Ceiling	152
T1007C	Weaving	139
T1009C	Braid	195
T1010C	Weaving	147
T1011C	Braid	159
T1012C	Weaving	120
T1013C	Weaving	158
T1017C	Weaving	210
T1037C	Broken Diagonal	179
T1050C	Metis	126
T1051C	Metis	200
T1104C	Weaving	201
T1109C	Braid	230
T1112C	Weaving	126
T1117C	Weaving	183
T1137C	Broken Diagonal	179
T1510C	Weaving	96
T1511C	Weaving	120
T2001C	Small Fishbone	170
T2002C	Domino	196
T2004C	Fishbone	192
T2007C	Lozenge	191
T2014C	Domino	195
T2018C	Fishbone	145
T2105C	Diagonal	184

TYPE	PATTERN	WEIGHT [g/m ²] ±8%
T3001C	Crepi	200
T3011C	Crepi	155
T3012C	Crepi	227
T3111C	Crepi	225
T3211C	Crepi	187

ADFORS Novelio® Classic EasyGlue

TYPE	PATTERN	WEIGHT [g/m ²] ±8%
GV130CE	DecoVeil	152
GV190CE	DecoVeil	216
T1000CE	Weaving	211
T1003CE	Ceiling	166
T1004CE	Weaving	265
T1006CE	Ceiling	176
T1007CE	Weaving	180
T1009CE	Braid	255
T1010CE	Weaving	196
T1010E	Weaving	196
T1013CE	Weaving	202
T1051E	Metis	220
T1104CE	Weaving	244
T1109CE	Braid	287
T1112CE	Weaving	166
T2004CE	Fishbone	253
T2101CE	Small Fishbone	215
T3001CE	Crepi	250
T3011CE	Crepi	188
T3012CE	Crepi	284
T3111CE	Crepi	250
T3211CE	Crepi	245

ADFORS Novelio® paintable glassfibre wallcoverings

ADFORS Novelio® Easy Fix

TYPE	PATTERN	WEIGHT [g/m ²] ±8%
T1038X	EasyFix	125

ADFORS Novelio® CleanAir

TYPE	PATTERN	WEIGHT [g/m ²] ±8%
GV130CF	DecoVeil	130
GV190CF	DecoVeil	190
N0101F	Ceiling	135
N0130F	Weaving	120
N0181F	Braid	175
N0710F	Crepi	210
T1013CF	Weaving	160

ADFORS Novelio® Mold-X

TYPE	PATTERN	WEIGHT [g/m ²] ±8%
GV130CM	DecoVeil	130
GV190CM	DecoVeil	190
N0101M	Ceiling	130
N0130M	Weaving	120
N0181M	Braid	170
N0710M	Crepi	210
T1013CM	Weaving	160

ADFORS Novelio® Renovation

TYPE	PATTERN	WEIGHT [g/m ²] ±8%
GV95CR	Foamy	95
GV250CR	DecoVeil	250
N0892	Taloche	210
T2004CR	Fishbone	415
GV190CR	DecoVeil	410
T1013CR	Weaving	380
T3111CR	Crepi	380

ADFORS Novelio® Renovation Acoustic

TYPE	PATTERN	WEIGHT [g/m ²] ±8%
GV190CY	DecoVeil	500
T1009CY	Braid	470
T1013CY	Weaving	510
T3011CY	Crepi	530

ADFORS Novelio® FireResist

TYPE	PATTERN	WEIGHT [g/m ²] ±8%
F1010C	Weaving	147
F1050C	Metis	126
F3011C	Crepi	160
F0892C	Taloche	220

ADFORS Novelio® Magnet

TYPE	PATTERN	WEIGHT [g/m ²] ±8%
GV200CMG	DecoVeil	1 100
T1006CMG	Ceiling	1 050
MWB	Flat	1 200

ADFORS Novelio® paintable glassfibre wallcoverings

Installation

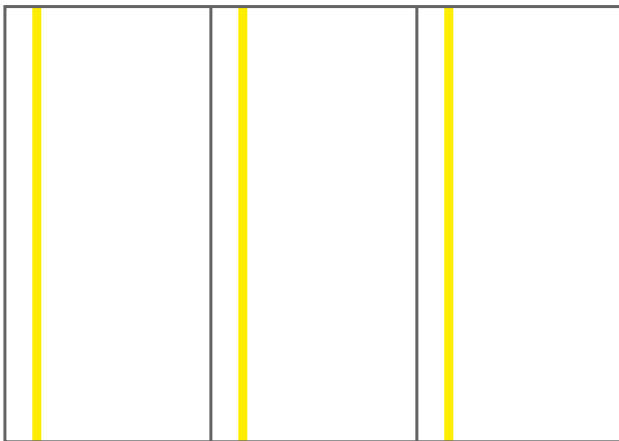
Substrate must be clean, dry, even (flat), stable and smooth. All holes or cracks must be filled. In case of stucco, small grains have to be removed from the surface before the installation. We recommend to prime the wall before the application in order to clean surface, unify the glue absorption and make the potential removal easier.

Do not apply product when the temperature is below 8 °C.

Apply the glue suitable for glassfibre wallcovering evenly on the wall by means of roller. Glue layer should be homogeneous and in quantity about 250 g/m². If the glue is applied with a spray device, it should always be evened out using a roller.

Place wallcovering panel immediately on the layer of fresh glue and press it over the whole surface by means of plastic spatula or rubber roller to remove any air bubbles. Push it carefully into the corners and cut of the excess by means of plastic or steel spatula with round edges.

Respect and keep the same orientation of individual panels. For that reason, products are marked on the back side with continuous yellow strip or batch number, which is close to one edge.



Product edges are precisely cut in order to use butt joint (edge to edge). Overlap is not recommended for woven styles, but can be used for nonwoven products (veils). When matching adjacent panels together, respect the pattern weaving in order to make joint “invisible”.



ADFORS Novelio® paintable glassfibre wallcoverings

In case of excess of glue coming out of joint, clean it immediately with wet sponge or towel. Let product enough time to dry – typically one day in standard conditions.

Painting must be realized once the product is completely dry. Standard interior water based paints are recommended. The second coat has to be applied again only after the complete drying – typically again after one day. EasyPaint (pre-painted, -C) styles require typically just one layer of paint (in case of light color finish).

For FireResist range, high-quality acrylic paint of maximum 250 g/m² is recommended.

Warranty

Products are carefully checked before leaving our factory. Due to its textile nature, they must be checked also before the final installation. Any claim should be accompanied with the roll label and a sample featuring the defect.

30.7.2021 11:06:57
1112 1166 005 323082
9212111038 2111122367
3036020912



In general, installation must be revised, checked after the hanging of few panels and possibly stopped if there is any visible issue. Any complaints made after installation of more than 10 panels cannot be accepted.

Storage


Products must be stored in clean and dry place.

ADFORS Novelio® paintable glassfibre wallcoverings

Certification

CE mark

Products bear CE mark as they are in comply with EN 15102. Declaration of Performance is available on request.

	
11	
SAINT-GOBAIN ADFORS CZ s.r.o., Sokolovská 106, 570 01 Litomyšl, CZ	
Identification code: P – 2 – Glass Fibre Wall Covering	
Ref. nr. of DoP: DOP – 2 – Glass Fibre Wall Covering – 03	
Glass Fibre Wall Covering	
Essential characteristics	Performance
Reaction to fire class:	B-s1 d0 (on plasterboard attached with starched-based glue)
Release of formaldehyde:	Passed
Release of other dangerous substances	
Antimony	< 4,00 ppm
Arsenic	Passed
Barium	Passed
Cadmium	Passed
Chromium	Passed
Copper	Passed
Lead	Passed
Mercury	Passed
Selenium	Passed
Vinyl chloride monomer	Passed
Sound absorption	NPD
Thermal resistance	NPD
Harmonised technical specification	EN15102:2007+A1:2011
Notified body	1020

SUIS

Full document is available on request. The products are not classified as hazardous according to European Regulation (EC) No 1272/2008 of the European Parliament and of the Council of 16 December 2008 on classification, labelling and packaging of substances and mixtures (CLP) and its subsequent amendments.

Reaction to fire

Products are naturally fire resistant as they are made from glass fibres. Reaction to fire classes:

Classic (all ranges), Renovation, EasyFix, Mold-X, CleanAir:

- EN 13501: B – s1, d0
- ASTM E84: Class A (FSI 20, SDI 5)
- CAN/ULC-S102: FSR 0, SDC 10

Magnet: EN 13501: C – s1, d0

Renovation Acoustic: EN 13501: C – s2, d0

FireResist: EN 13501: A2 – s1, d0

ADFORS Novelio® paintable glassfibre wallcoverings

OEKO-TEX

Products meet requirement of OEKO-TEX® standard 100. If a textile article carries the STANDARD 100 label, you can be certain that every component of this article, i.e. every thread has been tested for harmful substances and therefore the article is harmless for human health. The test is conducted by an independent OEKO-TEX® partner institutes on the basis of our extensive OEKO-TEX® criteria catalog. In the test they take into account numerous regulated and non-regulated substances, which may be harmful to human health. In many cases the limit values for the STANDARD 100 go beyond national and international requirements. The criteria catalog is updated at least once a year and expanded with new scientific knowledge or statutory requirements.

<https://www.oeko-tex.com/en/our-standards/standard-100-by-oeko-tex>

25.3.0033 – Glass fiber woven wallcoverings CZ

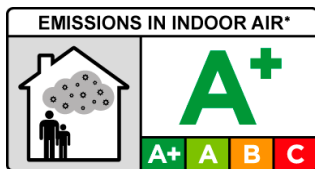
25.3.0073 – Glass fiber paintable wallcoverings AT

25.3.0147 – Glass fiber nonwoven, Novelio® Nature, FlashFibre, Decoration two-tones and Magnetic wallcoverings

French A+ VOC Label

Construction products, decoration and furnishing products to be traded in France are to be labelled with an emissions classification on the basis of VOC emissions tests. This is stated in the “Décret n° 2011-321” published on March 25th, 2011.

This mark has to be applied additionally to the CE mark (if required for the respective product). The basis of testing is ISO 16000.



Breathability

Products are breathable, allowing water vapors passing through them. This is extremely important for the durability of the wall and for the occupants as the blocked water is the main source of mold growth and development. Breathability was tested according to EN ISO 7783, s_d value ≤ 0.12 m.